

How to read Numazu & Mishima's OMOTENASHI Gourmet Map

Photos of owner's recommended menus & the restaurants interior.
*Some photos are for illustrative purposes only.

The times indicate business hours of each restaurant. Please note that business hours of individually operated restaurant may vary.

☀ is for lunch and 🌙 is for dinner's average budget. This amount may vary depending on your order.

These are the recommended menus from each restaurant. We selected our top recommendations from a wide variety of options.

This is the restaurant name on this gourmet map. Please note that some names are abbreviated from their original names, so please be careful when searching on the internet.

This number is linked to the numbers on the map on the left. The restaurants marked with 🍷 are listed as OMOTENASHI service offering restaurant.

We have listed the regular holidays of each restaurant next to their phone numbers. Due to spacing constraints, the positions may be disaligned. Additionally, please note that some holidays may be irregular.

Each restaurant has unique features, but we have clearly listed the general genres simply.

"Cash/Cards" means cash and credit cards are available. "Cash" means you can use cash and some restaurants are also available e-money.

Restaurant

TEL/055-9000-000 **Sun**

OPEN/00:00~00:00

Recommendation

IZAKAYA

closed 🌙 ¥3000

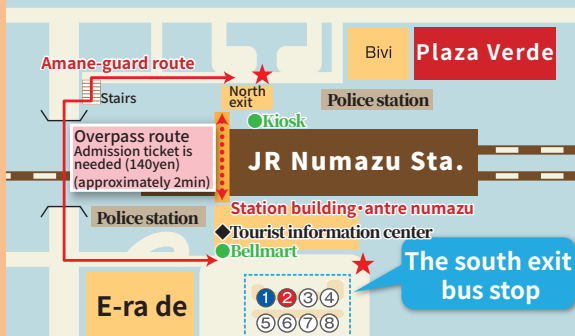
Cash/Cards

Please note that the information of this gourmet map are collected up from July to August, 2024, and the restaurants details may have changed as of November, 2024.

Overall map of Numazu and Mishima area



Numazu Sta. north-south route



[Directions to Numazu-port area]

A. Local buses (approximately 15min)

Izuhakone Bus・Numazu tozan tokai Bus
Numazu station south exit bus stop ① ②
[Operation] Between 11a.m. and 3p.m., there are 5 or 6 buses per hour
[Fee] Adult : 200yen/ Children : 100yen (for one way)

B. TAXI from the north exit

(approximately 10 min)
Approximately 1,200yen for one way ★

[Directions between Numazu and Mishima]

JR Tokaido Mainline (approximately 5min)

4 or 5 trains per hour
Mishima to Numazu
(Bound for Shizuoka Ex. Fuji・Shizuoka)
Numazu to Mishima
(Bound for Tokyo Ex. Atami・Tokyo)



PVSEC-35

List of OMOTENASHI Service offering restaurant

For PVSEC-35, this event, restaurant in Numazu city and Mishima city prepared special dishes and exclusive services for guests. If you would like to get this special offer, please show this map to a restaurant staff.

The restaurant offering OMOTENASHI service has on page 5, 7, 9, 11

Numazu sta. north exit area (4P・5P)

Numazu sta. south exit area (6P・7P)

Numazu port area (8P・9P)

17 Public Izakaya TABA-CHAN

Limited service

grilled giblets & Beer
549yen + 438yen
= ~~987yen~~ → **900yen**



22 Yakiniku KURUMI

special menu

Gejang 1320 → 980yen
(marinated raw crabs)
Makgeolli 1540 → 980yen



5 con le mani

special menu

made with local ingredients



22 Meat&Veggie ASHITABA

Limited service

Fujinomiya yakisoba & Beer
759yen + 638yen
= ~~1397yen~~ → **1000yen**



27 Oden-Izakaya HIDA

Limited service

appetizer with red shrimp that spoil people



11 TSUNAMOTO TAKEDAMARU

Limited service

free soda fountain



*This photo is for illustrative purposes only.

14 DONKURABE

Limited service

free fish head miso soup



*This photo is for illustrative purposes only.

23 WASYOKU DARUMA

Limited service

two free small fried horse mackerels



*This photo is for illustrative purposes only.

27 eel shop KYOMARU

Limited service

one free drink



*This photo is for illustrative purposes only.

19 Lounge bar KUJIRA

special menu

WASABI Pizza

*Please enjoy with Wasabi vodka tonic!



3 Sister's Cafe

special menu

Japanese style pizza with whitebait made in Shizuoka, salad & cake・drink set 1650yen



7 HACHIYA

Limited service

green onion mayonnaise dumpling 880yen → 800yen



23 HORMONE MOMOKO

Limited service

stewed beef tendon & Beer
549yen + 615yen
= ~~1164yen~~ → **1000yen**



9 KAIZOKUTEI

Limited service

A cup of oolong tea



*This photo is for illustrative purposes only.

12 taste of Suruga DONMUSU

special menu

horse mackerel set meal (only Japanese language available)



21 Numazu UOGASHIZUSHI (flagship store)

Limited service

two pieces Nigiri-zushi



*This photo is for illustrative purposes only.

24 AJIYA

Limited service

one free side dish



*This photo is for illustrative purposes only.

28 sushi shop FURUKAWA

Limited service

one free drink



*This photo is for illustrative purposes only.

20 TEPPAN! ASHITABA

Limited service

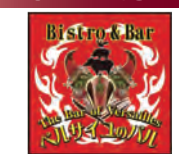
kyabe II & Beer
583yen + 638yen
= ~~1221yen~~ → **1000yen**



4 VERSAILLES NO BARU

Limited service

free assorted mini-appetizers



16 Italian restaurant MEGURU

Limited service

spicy cream pork stomach stew



26 BREEZE BLUE

special menu

salty dog with Heda-salt 1000yen



10 FUMINO

special menu

raw whitebait & sakura shrimp don

Limited service

side dish (neon flying squid)



13 SUSHIKAISEN UOTEI

special menu

local fish



*This photo is for illustrative purposes only.

22 MINATO SYOKUDO

Limited service

one free side dish



*This photo is for illustrative purposes only.

26 SUSHIAN SAITO (flagship store)

Limited service

one free side dish



*This photo is for illustrative purposes only.

29 FUTABAZUSHI

Limited service

Giveaway an exclusive sake cup

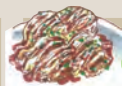


*This photo is for illustrative purposes only.

Numazu Sta. north exit Area



SHIZUOKA Bank



16

26

23 15 24

13

1

12

2



3

25 14

The Numazu
Shinkin Bank

H Toyoko Inn Fujisan
Numazu north exit 2

H

Shizutetsu Hotel Prezio

27



18

17



7-ELEVEN

H HOTEL
WEST

H HOTEL
MIWA

6

5

7

4

8

10

9

TAKAZAWA
Park

28

Toyoko Inn Fujisan
Numazu north exit 1

H

19

20



Daiwa Roynet
Hotel

H

Plaza Verde

AMANE guard north

29



Cocochee
Hotel

H

H

Kuretake Inn Premium
Numazu station north exit

Bivi

Numazu Sta. north exit

Numazu Sta.

Numazu Sta. south exit

JR Gotemba line

To Tokyo
JR Tokaido line

To Fuji

JR Tokaido line

AMANE guard

30



Numazu offal RYUMARU 1
055-955-6731 Mon, the third Sun
OPEN/5p.m.~11p.m.

Recommendation YAKINIKU
pork colon • pork rectum
beef colon
closed ☺ ¥3000 Cash/Cards



ARIYA 11
TEL/055-916-8180 Mon
OPEN/11:30a.m.~2p.m.
(closed on Sat/Sun) 5p.m.~2p.m.

Recommendation Thai
massaman curry
closed ☺ ¥2000 Cash only



Public Izakaya IMASAN 21
TEL/055-9922-4444
open all year round
OPEN/5:30p.m.~0a.m.

Recommendation IZAKAYA
Boiled offal • Shimizu giblets curry
• sakura shrimp tempura
closed ☺ ¥2000 Cash only



630STAND 2
TEL/090-2084-0630 Wed, Sun
OPEN/11:30a.m.~2p.m. (closed on Sat)
6p.m.~10p.m.

Recommendation Bar restaurant
Lunch: tomato-based spaghetti
Dinner: Japanese fried chicken
☺ ¥1000 ☺ ¥1000 Cash/Cards



variety of dishes
CHANOMA COO 12
TEL/055-925-7766 Mon
OPEN/5p.m.~0a.m.

Recommendation IZAKAYA
roast beef sushi
closed ☺ ¥3000 Cash/Cards



Yakiniku KURUMI 22
TEL/055-921-6711
irregular holidays
OPEN/5:30p.m.~11:30p.m.

Recommendation Korean
assorted yakiniku
closed ☺ ¥5000 Cash/Cards



Seafood Izakaya AYAMIYA 3
TEL/055-923-7660 Sun
OPEN/11:30a.m.~1:30p.m.
5p.m.~11p.m.

Recommendation IZAKAYA
AYAMIYA-don DX • assorted sashimi
☺ ¥1000 ☺ ¥3000 Cash only



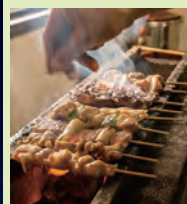
Grill • Sea food • sake TOTORO 13
TEL/055-926-0008 Sun
OPEN/ 11:30a.m.~2p.m./5p.m.~0a.m.

Recommendation Sea Food
sashimi • oden
closed ☺ ¥3000 Cash/Cards



Meat, sake & seafood WARAKU 23
TEL/055-939-7229 Sun
OPEN/5p.m.~0a.m.

Recommendation IZAKAYA
beef tendon tofu
closed ☺ ¥3000 Cash/Cards



Japanese chicken skewers SAWAKKO 4
TEL/055-924-9655 Sun
OPEN/6p.m.~10p.m.

Recommendation YAKITORI
assorted Japanese chicken skewers
homemade dumpling
closed ☺ ¥3000 Cash/Cards



Lava Yakiniku SHU 14
TEL/055-960-9600 Mon
OPEN/5p.m.~0a.m.

Recommendation YAKINIKU
assorted yakiniku • fresh liver
closed ☺ ¥5000 Cash/Cards



Aladdin Restaurant 24
Indian & Pakistan
TEL/055-926-0141 open all year round
OPEN/11a.m.~3p.m. 3p.m.~11p.m.

Recommendation Indian
biryani Lunch: buffet (ALL HALAL)
☺ ¥1000 ☺ ¥1000 Cash only



BAR THE PINE 5
TEL/055-922-2377 Sun
OPEN/5p.m.~2a.m.

Recommendation BAR
Cocktails using vacuum distillation,
centrifuges, and liquid nitrogen
closed ☺ ¥4000 Cash/Cards



REIJINHANTEN 15
TEL/055-926-8488
open all year round
OPEN/5p.m.~0a.m. (Sun 5p.m.~2a.m.)

Recommendation Chinese
Stone-grilled mapo tofu
Drool chicken
closed ☺ ¥3000 Cash/Cards



Chang Thai 25
TEL/055-955-5850
open all year round
OPEN/11:30a.m.~2:30p.m./5p.m.~9p.m.

Recommendation Thai
gapao rice
☺ ¥1000 ☺ ¥2000 Cash only



JOLIE ANGE 6
TEL/055-928-5001 Tue
OPEN/10a.m.~7p.m.

Recommendation Pancake
brulee pancake
☺ ¥1500 ☺ ¥1500 Cash/Cards



Public Izakaya SATOHI 16
TEL/055-926-9393
open all year round
OPEN/5p.m.~0a.m.

Recommendation IZAKAYA
satohi croquette
beef lean meat with lava roasting
closed ☺ ¥3000 Cash/Cards



Nazare 26
TEL/055-916-0628
Mon & the first, third, fifth Sun
OPEN/11:30a.m.~1:30p.m.
5:30p.m.~9p.m.

Recommendation Portuguese
seafood cataplana • madeira wine
☺ ¥1500 ☺ ¥4000 Cash/Cards



SENRAKU 7
TEL/055-921-1114 Wed
OPEN/11a.m.~1:30p.m.
(Sat/Sun 11a.m.~2p.m.) 5p.m.~8p.m.

Recommendation restaurant
hashed beef with tonkatsu
☺ ¥1000 ☺ ¥1000 Cash only



Public Izakaya TABA-CHAN 17
TEL/055-926-7784
open all year round
OPEN/4p.m.~0a.m. (Sun 3p.m.~11p.m.)

Recommendation IZAKAYA
Boiled offal • fresh horse mackerel
closed ☺ ¥3000 Cash/Cards



TEJYANGUMU 27
TEL/055-921-4200 Mon
OPEN/5p.m.~2a.m.

Recommendation Korean
cheese dak galbrosé tteok-bokki
closed ☺ ¥4000 Cash/Cards



Chill bar GIFT 8
TEL/070-7773-3583 Thu
OPEN/ 7p.m.~LAST

Recommendation BAR
Grilled beef skirt steak
☺ ¥1000 ☺ ¥1000 Cash/Cards



Chinese Izakaya SUIKEN 18
TEL/070-9105-0331 Sun
OPEN/5:30p.m.~0a.m.

Recommendation IZAKAYA
ramen • dumpling
closed ☺ ¥3000 Cash/Cards



FUJISAN GYOZA 28
TEL/055-955-8559 Sun
OPEN/10a.m.~3p.m./3p.m.~5:30p.m.

Recommendation Dumpling
dumpling set
☺ ¥1000 ☺ ¥1000 Cash only



ITAROU 9
TEL/055-921-7292 Tue
OPEN/11a.m.~9p.m.

Recommendation spaghetti
pork cutlet spaghetti with cheese
☺ ¥1000 ☺ ¥1000 Cash only



Lounge bar KUJIRA 19
055-920-4700
open all year round
OPEN/ 7p.m.~4a.m.

Recommendation BAR
WASABI vodka tonic
closed ☺ ¥3000 Cash/Cards



Sea food IZAKAYA WASSHOI 29
TEL/055-925-0573 Sun
OPEN/5p.m.~11p.m.

Recommendation IZAKAYA
assorted sashimi
closed ☺ ¥3000 Cash/Cards



Innovative Izakaya RENGA 10
TEL/055-957-4588 Tue
OPEN/5p.m.~0a.m.

Recommendation IZAKAYA
sashimi • Japanese chicken skewers
closed ☺ ¥3000 Cash/Cards



TEPPAN! ASHITABA 20
TEL/055-922-7784
open all year round
OPEN/5p.m.~1a.m.

Recommendation IZAKAYA
Cabbaz (Something like okonomiyaki)
closed ☺ ¥3000 Cash/Cards



Innovative Izakaya MARU 30
TEL/055-957-3661 Sun
OPEN/6p.m.~4a.m.

Recommendation IZAKAYA
five meat rolls • assorted sashimi
closed ☺ ¥3000 Cash/Cards

Numazu Sta. south exit Area

Bar's in Numazu

There are numerous bars in Numazu city. They range widely from authentic-style bars to casual ones, so a lot of fans come to visit all over Japan.

- | | | |
|-------------|-------------------|----------------|
| ① Frank Bar | ④ Ninoe | ⑦ TOM'S BAR |
| ② BAR FARAO | ⑤ BAR EROS | ⑧ REIWA NELSON |
| ③ GATO BAR | ⑥ NEKO to HAKUCHO | ⑨ Victory |





**Innovative cuisine bar
KOMOREBI**
TEL/055-946-6669
OPEN/6p.m.~11p.m.

Recommendation **IZAKAYA**

homemade sausage•rebateki
(liver steak cooked at low-temperature)

☀️¥900 ☀️¥3000 Cash only




BAKER'S DOZEN
TEL/055-954-2266 Sun
OPEN/11a.m.~2p.m. 5p.m.~10p.m.

Recommendation **Italian**

Pasta, raw ham & salami, lunch set

☀️¥1000 ☀️¥4000 Cash/Cards



Sister's Cafe
TEL/055-963-1139 Sun
OPEN/10a.m.~3p.m. 5p.m.~9p.m.

Recommendation **Café**

cake set•stewed hamburger steak

☀️¥990 ☀️¥990 Cash only



**Meat,wine&whiskey soda
VERSAILLES NO BARU** irregular holidays
TEL/055-962-7880
OPEN/11:30a.m.~3p.m. 6p.m.~11p.m.

Recommendation **IZAKAYA**

fried half chicken

☀️¥800 ☀️¥4000 Cash/Cards



**Town Italian wine-bar
con le mani**
TEL/055-952-1341 Sun,Mon
OPEN/Tue~Thu11:30a.m.~2:30p.m.
6p.m.~10p.m. Fri~Sat 6p.m.~11p.m.

Recommendation **Italian**

fish dish with seasonal ingredients

☀️¥1000 ☀️¥6000 Cash/Cards



niie
TEL/055-951-0330 irregular holidays
OPEN/8p.m.~3a.m.

Recommendation **BAR**

grilled outside skirt

☀️closed ☀️¥3000 Cash/Cards



HACHIYA
TEL/090-5115-6115 Sun
OPEN/5p.m.~0a.m.

Recommendation **Dumpling**

green onion mayonnaise dumpling

☀️closed ☀️¥3000 Cash only



TONKATSU KOGANE
TEL/055-962-6120 Mon
OPEN/11a.m.~2p.m. 5p.m.~8p.m.

Recommendation **TONKATU**

TONKASTU set (pork cutlet)

☀️¥1000 ☀️¥1100 Cash only



OKKON MIYABI
TEL/055-939-6588 Tue
OPEN/11:30a.m.~5p.m. 5p.m.~0a.m.

Recommendation **OKONOMIYAKI**

Lunch:Hiroshima dipping noodles
Dinner:Hiroshima okonomiyaki

☀️¥700 ☀️¥2500 Cash/Cards



SHAN SHAN HAN TEN
TEL/055-951-0889
open all year round
OPEN/11a.m.~2:30p.m. 5p.m.~3a.m.

Recommendation **Chinese**

Stone-grilled mapo tofu

☀️¥1000 ☀️¥3000 Cash/Cards




Bistro Coucou
TEL/055-957-3264 Sun
OPEN/11:30a.m.~2p.m. 17:30p.m.~23p.m. Fri~Thi17:30p.m.~2a.m.

Recommendation **Bistro**

roasted duck breast

☀️¥1300 ☀️¥4000 Cash/Cards



Numa Kebab irregular holidays
TEL/080-4778-6010
OPEN/0p.m.~3p.m. 5p.m.~11p.m.

Recommendation **Kebab**

Kebab (krazy Heda's salt smoke)

☀️¥800 ☀️¥800 Cash only



**YAKINIKU IZAKAYA
GYUBEI**
TEL/055-951-7770 Sun
OPEN/6p.m.~3a.m.

Recommendation **IZAKAYA**

Red offal

☀️closed ☀️¥3000 Cash/Cards



**Deep-fried skewers
KUSHIBEI**
TEL/055-951-7800 irregular holidays
OPEN/5p.m.~2a.m.

Recommendation **IZAKAYA**

deep-fried skewers
meat sushi

☀️closed ☀️¥2000 Cash/Cards



**Sea food IZAKAYA
DARUMAYA**
TEL/055-962-4252 Sun
OPEN/4p.m.~0a.m.

Recommendation **IZAKAYA**

seasonal sashimi

☀️closed ☀️¥4000 Cash/Cards



**Italian restaurant
MEGURU**
TEL/055-919-3836 Mon
OPEN/6p.m.~11p.m. (L.O22:00)

Recommendation **Italian**

carpaccio of three kinds of seafood
Japanese blue crab tomato spaghetti

☀️closed ☀️¥3000 Cash/Cards




RAMEN KUROGANE
TEL/055-919-0024
Sun(dinner time),Mon
OPEN/11a.m.~3p.m. 5:30p.m.~9p.m.

Recommendation **RAMEN**

Japanese style bonito dashi ramen
burnt dried sardine tonkotsu ramen

☀️¥800 ☀️¥800 Cash only



EVEREST DINING
TEL/055-954-0145
open all year round
OPEN/11a.m.~3p.m. 5p.m.~0a.m.

Recommendation **Indian**

butter chicken curry (ALL HALAL)

☀️¥900 ☀️¥1200 Cash/Cards



SHAN SHAN BOU
TEL/055-963-3682
open all year round
営業時間/11a.m.~2p.m.
5p.m.~0a.m. (Fri/Sat/Sun 5p.m.~3a.m.)

Recommendation **Chinese**

mutton skewers

☀️¥1000 ☀️¥3000 Cash/Cards




**Buckwheat-IZAKAYA
EBISUAN**
TEL/055-962-2376 Thu
OPEN/11a.m.~11p.m.

Recommendation **Buckwheat**

Lunch:EBISUAN set
Dinner:Tenzaru Soba

☀️¥650 ☀️¥2000 Cash/Cards



café SPOONIE
TEL/055-964-4944 Wed
OPEN
/11a.m.~8p.m.

Recommendation **Cafe**

cake set
rich French chocolate cake

☀️¥1000 ☀️¥4000 Cash only




**Meat&Veggie
ASHITABA**
TEL/055-962-7711
OPEN/5p.m.~0a.m. open all year round

Recommendation **IZAKAYA**

sirloin steak of Ashitaka beef
Fujinomiya yakisoba(stir-fried noodles)

☀️closed ☀️¥4500 Cash/Cards




**Grilled offal
HORMONE MOMOKO**
TEL/055-962-8833
OPEN/4p.m.~11p.m. irregular holidays
Sun 3p.m.~10p.m.

Recommendation **IZAKAYA**

offal•stewed beef tendon
raw beef heart

☀️closed ☀️¥3000 Cash/Cards



**Draft&craftbeer and wine
aiai**
TEL/055-962-1549 Tue
OPEN/5:30p.m.~0a.m.

Recommendation **Bistro**

homemade smoked mackerel

☀️closed ☀️¥3500 Cash/Cards



**Innovative cuisine
YUGA**
TEL/055-964-6700 open all year round
OPEN/5p.m.~0a.m.

Recommendation **IZAKAYA**

five kind of fresh local fish
lettuce shabu shabu

☀️closed ☀️¥4000 Cash/Cards



**The BAR
BREEZE BLUE**
TEL/055-954-1134 Sun
OPEN/7p.m.~last

Recommendation **BAR**

mojito

☀️closed ☀️¥3000 Cash/Cards



**Oden-Izakaya
HIDA**
TEL/055-951-3832 Sun
OPEN/5p.m.~0a.m.

Recommendation **IZAKAYA**

oden•broth with local sake

☀️closed ☀️¥3000 Cash/Cards



**Very cool guy bar
YU**
TEL/055-963-0610 Sun
OPEN/5:30p.m.~11:30p.m. (L.O23p.m.)

Recommendation **IZAKAYA**

tuna&pickled radish

☀️closed ☀️¥4000 Cash/Cards



**Monjayaki&Teppanyaki
HAGASHI**
TEL/055-900-8661 Thu
OPEN/4p.m.~11p.m.
(Fri/Sat 4p.m.~0a.m.)

Recommendation **Monjayaki**

monjayaki with pollack roe&rice cake

☀️closed ☀️¥2000 Cash/Cards



**Japanese chicken skewers
SAKUEMON**
TEL/055-941-7075 Mon
OPEN/5p.m.~10p.m.

Recommendation **IZAKAYA**

Japanese chicken skewers
Japanese sake

☀️closed ☀️¥3000 Cash only

Numazu-port area

△for Numazu Station

YAMASYO (Numazu south shop)
turn left after
across the Minato-Ohashi (in the Maxvalue) 25 →

Minato-Ohashi →

Taxi stand

Bus station

1 2



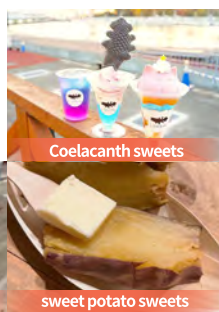
Bicycle rental

Boarding point of CHIDORIMARU

eat around at
Numazu port



Matcha drink



Coelacanth sweets

sweet potato sweets



Deep-sea pudding



Japanese omelet



Oil Sabadines



fresh Wasabi



local bag-T-shirt



local keychain



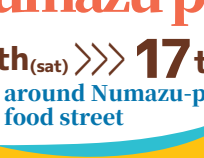
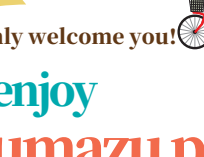
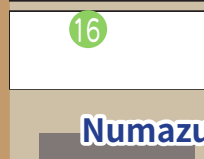
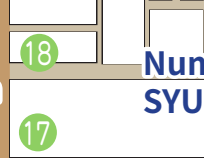
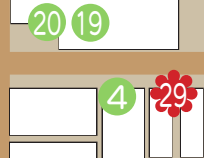
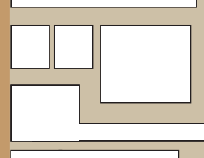
13 Numazu fish market INO

8

Numazu
Minato
Shinsenkan

Numazu fish
market

DAINOBU center
parking lot



Numazu Deep-sea Aquarium

Minato 83rd street

2 1 P



Available in Chinese
KANEKIN seafood shop



●Yokoya

Available in French and English

Numazu-port
SYUNSAIGAI



Numazu Minato(port) parking lot

P

P

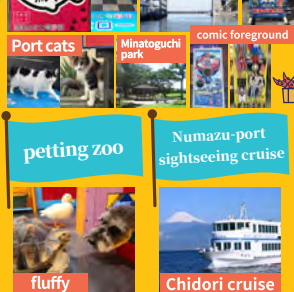
Parking lot entrance



Family-friendly event
Game stall



SAKANA road View-O



For everyone



We warmly welcome you!



Let's enjoy
at Numazu port

Nov. 9th(sat) >>> 17th(sun)
around Numazu-port
food street

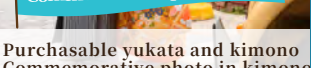
Bicycle rental
1,500yen/12hours
Bus from Numazu
station south exit
1,200yen/10 minutes



at WEDDING FANTASIA




Walk in kimono
Kimono wearing experience
Commemorative photo



Purchasable yukata and kimono
Commemorative photo in kimono






Ama's kitchen grilled seafood 1
AMAGOYA BBQ
 TEL/055-954-3935
 OPEN/10a.m.~4p.m. **irregular holidays**
 Recommendation **Seafood**
 scallop•oyster•turban shell
 ☀ ¥2000 closed Cash/Cards




Ama's kitchen seafood don 2
RYOSHIMESHI SYOKUDO
 TEL/055-964-1055
 OPEN/10a.m.~4p.m. **irregular holidays**
 Recommendation **Seafood**
 fisherman's Fuji-mori don
 ☀ ¥2000 closed Cash/Cards



NUMAZU KAKI GOYA 3
 TEL/055-962-6811
 OPEN/10a.m.~4p.m. **irregular holidays**
 (Sat/Sun/9:30a.m.~4:30p.m.)
 Recommendation **Buffet**
 raw oyster•grilled oyster
 grilled seafood
 ☀ ¥4000 closed Cash/Cards



seafood don 4
GOTETSU HONTEN
 TEL/055-946-5835
 OPEN/11a.m.~4p.m. **open all year round**
 (Sat/Sun/11a.m.~4:30p.m.)
 Recommendation **Seafood**
 ultimate GOTETSU
 ☀ ¥1500 closed Cash/Cards



fresh horse mackerel shop 5
Numazu port- ASHITABA
 TEL/055-939-7784
 OPEN/10a.m.~3p.m. **open all year round**
 Recommendation **Horse mackerel**
 fresh horse mackerel
 green-tartar fried horse mackerel
 ☀ ¥1500 closed Cash/Cards



grilled seafood 6
HAMAYAKI SHIN-CHAN
 TEL/055-954-0605
 OPEN/11:30a.m.~9p.m. **Tue**
 Sat/11a.m.~9:30p.m. Sun/11a.m.~9p.m.
 Recommendation **Seafood**
 Suruga Bay deep sea platter
 ☀ ¥1600 closed Cash/Cards



seafood don 7
SAMASA
 TEL/055-939-5333
 OPEN/10a.m.~5p.m. **Thu**
 Recommendation **Seafood**
SHINKAI DON
 Special selection SAMASA DON
 ☀ ¥1500 closed Cash/Cards



TONY'S HONOLULU 8
 TEL/055-954-6366
 OPEN/Lunch 11a.m.~10p.m. **open all year round**
 Recommendation **Hawaiian**
 loco moco•jumbo fried shrimp
 ☀ ¥1000 closed Cash/Cards



KAIZOKUTEI 9
 TEL/055-952-5525
 OPEN/8a.m.~4p.m. **Fri**
 Recommendation **Japanese**
 sashimi•seafood don
 ☀ ¥1500 closed Cash only



seafood don 10
Fumino
 TEL/055-952-3923
 OPEN/6a.m.~4:30p.m. **Tue**
 Recommendation **Seafood**
 seafood don with sea urchin
 ☀ ¥1500 closed Cash only



TAKEDAMARU 11
 TEL/055-952-3311
 OPEN/10:30a.m.~4p.m. **open all year round**
 Recommendation **Japanese**
 fisherman's set meal
 ☀ ¥1500 closed Cash only



taste of Suruga 12
DONMUSU
 TEL/055-962-5111
 OPEN/11a.m.~5p.m. **Thu**
 (Sat/Sun/11a.m.~3p.m.)
 Recommendation **Seafood**
 fisherman's set meal
 only Japanese language available
 ☀ ¥1500 ¥1500 Cash/Cards



SUSHIKAISEN UOTEI 13
 TEL/055-954-1788
 OPEN/11a.m.~7:30p.m. **Thu**
 Recommendation **Sushi**
 Suruga set meal (Numazu brand)
 ☀ ¥3000 ¥3000 Cash/Cards



seafood don 14
DONKURABE
 TEL/055-939-5910
 OPEN/10:30a.m.~3p.m. **irregular holidays**
 Sat/Sun/Holidays 10:30a.m.~8p.m.
 Recommendation **Seafood**
 special seafood don
 ☀ ¥1500 ¥1500 Cash/Cards



seafood don 15
MARUKAN
 TEL/055-941-8770
 OPEN/7:30a.m.~3p.m. **the second • fourth Tue**
 Recommendation **Seafood**
 seafood don(manager's choice)
 ☀ ¥500 closed Cash only



seafood don 16
JIN
 TEL/055-960-7772
 OPEN/9a.m.~4p.m. **irregular holidays**
 Recommendation **Seafood**
 tuna-centric don•red bream don
 ☀ ¥1500 closed Cash/Cards



Numazu deep sea pudding shop 17
AO TO PURIN TO GELATO TO
 TEL/055-957-4223
 OPEN/10a.m.~5p.m. **open all year round**
 (Sat/Sun/10a.m.~5:30p.m.)
 Recommendation **Sweets**
 deep deep sea pudding
 ☀ ¥430 closed Cash/Cards




MUSUBIYA 18
 TEL/055-963-5484
 OPEN/7a.m.~3p.m. **Tue**
 Recommendation **Set meal**
 jumbo fried shrimp
 ☀ ¥1500 closed Cash only



grilled seafood 19
KAMOMEMARU
 TEL/055-952-3639
 OPEN/11a.m.~2:30p.m. **irregular holidays**
 (Sat/Sun/Holidays 10:30a.m.~2:30p.m.)
 Recommendation **Seafood**
 grilled seafood
 ☀ ¥3000 closed Cash/Cards



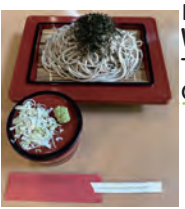
Japanese & seafood don 20
SENBONICHI
 TEL/055-952-0025
 OPEN/11a.m.~2:30p.m. **irregular holidays**
 (Sat/Sun/Holidays 10:30a.m.~2:30p.m.)
 Recommendation **Seafood**
 Numazu sanshoku
 ☀ ¥1500 closed Cash/Cards



UOGASHIZUSHI 21
 TEL/055-963-4090
 OPEN/10:30a.m.~8p.m. **open all year round**
 (Sat/Sun/Holidays 10a.m.~9p.m.)
 Recommendation **Sushi**
 Numazu-port Nigiri-zushi
 ☀ ¥3000 ¥3000 Cash/Cards



MINATO SYOKUDO 22
 TEL/055-962-2800
 OPEN/10a.m.~3p.m. **the second • fourth Tue**
 Recommendation **Set meal**
 special lunch•dried fish set meal
 seafood set meal
 ☀ ¥1500 closed Cash/Cards



buckwheat noodle 23
WASYOKU DARUMA
 TEL/055-955-9911
 OPEN/10a.m.~8p.m. **irregular holidays**
 Recommendation **Buckwheat**
 buckwheat noodle
 ☀ ¥1500 ¥1500 Cash only



AJIYA 24
 TEL/055-964-1400
 OPEN/9:30a.m.~2:30p.m. **the second • fourth Tue**
 (Sat/Sun/Holidays 9a.m.~2:45p.m.)
 Recommendation **Japanese**
 horse mackerel-centric seat meal
 ☀ ¥1500 closed Cash/Cards



YAMASHO (Numazu south) 25
 TEL/055-957-1237
 OPEN/11:30a.m.~3p.m. 5p.m.~9p.m. **Thu • the third Wed**
 (Sat/the day before a holiday 5p.m.~9:30p.m.)
 Recommendation **Sushi**
 "Numazu mankitsu nigiri" 13pieces
 + 1 sushi roll
 ☀ ¥3000 ¥3000 Cash/Cards



SUSHIAN SAITO 26
 TEL/055-954-3009
 OPEN/11:30a.m.~2p.m. 5p.m.~9p.m. **Thur • the third Wed**
 (Sat/Sun/Holidays 11:30a.m.~3p.m.)
 Recommendation **Sushi**
 Raw squid with sea urchin
 ☀ ¥3000 ¥3000 Cash/Cards



eel shop KYOMARU 27
 TEL/055-951-0358
 OPEN/11a.m.~9p.m. **Tue**
 Recommendation **Eel**
 KYOMARU set meal
 ☀ ¥2000 ¥2000 Cash/Cards



sushi shop FURUKAWA 28
 TEL/055-964-4141
 OPEN/11:30a.m.~9p.m. **Thu**
 Recommendation **Sushi**
 FUYO ※sushi set (refer to the picture)
 ☀ ¥3000 ¥3000 Cash/Cards



FUTABAZUSHI 29
 TEL/055-962-0885
 OPEN/11a.m.~2p.m. 4:30p.m.~8p.m. **Tue • monthly on Wed (irregular)**
 Recommendation **Sushi**
 Sushi
 ☀ ¥3000 ¥3000 Cash/Cards



fresh fish shop seafood don 30
SENRYOYA
 TEL/055-941-8800
 OPEN/11a.m.~2p.m. **Tue • Wed (the second • fourth)**
 Recommendation **Seafood**
 special seafood don
 ☀ ¥1500 closed Cash/Cards

Area around Mishima Sta.

Mishima eels

Mishima is one of the most famous places of eels. Due to swim in the spring water from Mt. Fuji, they remove any fishy and muddy smell and they become more delicious.



Mishima croquette

Mishima croquette is made using 100% of Mishima potatoes harvested from Mt. Hakone. The fillings and shapes of the croquettes are unique to each other, such as soft serve ice cream and heart.





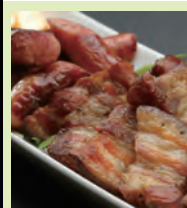
PublicTeppan Izakaya
ASHITABA
 TEL/055-955-7784 **Sun**
 OPEN/5p.m.~1a.m.
 Recommendation **IZAKAYA**
 Cabb2(Something like okonomiyaki)
 closed ¥3000 Cash/Cards



Eel Japanese
GENJI
 TEL/055-975-0882 **irregular holidays**
 OPEN/11a.m.~9:30p.m.
 Recommendation **Japanese**
 eel*eel croquette*sashimi
 closed ¥1000 ¥3000 Cash/Cards



BEEFRIENDS
 TEL/055-957-6950 **Tue**
 OPEN/11:30a.m.~10:30p.m.
 Recommendation **Sandwich**
 roast beef sandwich*veggie-beef sandwich*veggie-chicken sandwich
 closed ¥1000 ¥2000 Cash/Cards



RAI4
 TEL/055-991-2828 **Tue**
 OPEN/6p.m.~2a.m.
 Recommendation **Dining Bar**
 assorted smoked food*RAI4 waffle
 closed ¥2500 Cash/Cards



EN FRANCE
 TEL/055-991-5670 **Sun*Mon**
 OPEN/11a.m.~2p.m. 5p.m.~9p.m.
 Recommendation **French**
 seasonal French couse of Mishima
 closed ¥2000 ¥5000 Cash/Cards



OSHIMA
 TEL/055-971-1919 **Sun**
 OPEN/5p.m.~11p.m.
 Recommendation **IZAKAYA**
 boar hotpot*loach hotpot eel*sashimi
 closed ¥4000 Cash/Cards



SHANSHANHANTEN
 TEL/055-991-5888 **open all year round**
 OPEN/11:30a.m.~2p.m. 5p.m.~2a.m.(Fri/Sat~3a.m.-Sun~0a.m.)
 Recommendation **Chinese**
 Stone-grilled mapo tofu Droll chicken
 closed ¥1000 ¥2000 Cash only



Ragazzo
 TEL/055-971-0311 **Sun**
 OPEN/6p.m.~11p.m.
 Recommendation **Italian**
 pasta*pizza*carpaccio
 closed ¥3000 Cash only



SUMINOBOU **open all year round**
 TEL/055-975-0499 **open all year round**
 OPEN/11a.m.~2:30p.m. 4:30a.m.~8p.m. (Sat/Sun/Holidays11a.m.~8p.m.)
 Recommendation **E e I**
 Normal eel rice box
 closed ¥5000 ¥5000 Cash/Cards



Seafood Izakaya
SANDAIME-UOTEI
 TEL/055-950-8767 **Sun**
 OPEN/5:30p.m.~11p.m.
 Recommendation **Seafood**
 assorted sashimi
 closed ¥3000 Cash/Cards



KIKUNOTORI
 TEL/055-957-3369 **Sun**
 OPEN/5p.m.~0a.m.
 Recommendation **YAKITORI**
 Japanese chicken stewers creamed scallop&sea urchin
 closed ¥4000 Cash/Cards



UNAGI NO BANDOU
 TEL/055-981-1212 **irregular holidays**
 OPEN/11a.m.~8:30p.m.
 Recommendation **E e I**
 eel rice box SAKURA
 closed ¥4000 ¥4000 Cash/Cards



deep-fried skewer*oden
FUTATSUME
 TEL/055-976-5556 **Sun**
 OPEN/5p.m.~11:30p.m.
 Recommendation **IZAKAYA**
 deep-fried skewer*oden
 closed ¥3000 Cash/Cards



HIDE
 TEL/055-971-0721 **Mon**
 OPEN/5p.m.~10p.m. (Sun/Holidays5p.m.~9p.m.)
 Recommendation **YAKINIKU**
 salted beef stomach*skirt stea
 closed ¥3000 Cash only



FUDO
 TEL/055-955-8665 **open all year round**
 OPEN/11:30a.m.~2:30p.m. 5:30a.m.~0a.m.
 Recommendation **IZAKAYA**
 fried burdock*grilled Mochi Pork with sake lees and miso*sashimi
 closed ¥1000 ¥3000 Cash/Cards



eel Izakaya
FUJIYA
 TEL/055-950-8773 **Sun**
 OPEN/5p.m.~11p.m.
 Recommendation **IZAKAYA**
 eel skewer*hitsumabushi
 closed ¥4000 Cash/Cards



ELU RIO
 TEL/055-972-3515 **irregular holidays**
 OPEN/5p.m.~11p.m.
 Recommendation **Chinese**
 original ramen*fried rice
 closed ¥1000 ¥1000 Cash/Cards



PAPPATORIA
 TEL/055-972-2234 **Wed**
 OPEN/11:30a.m.~2p.m. 6a.m.~10p.m.
 Recommendation **Italian**
 oyster and meat
 closed ¥1500 ¥4000 Cash/Cards



Green-room
 TEL/055-973-8810 **Sun*Mon**
 OPEN/11:30a.m.~3p.m.
 Recommendation **Dining Bar**
 Roast beef of aitchbone
 closed ¥1500 Cash/Cards



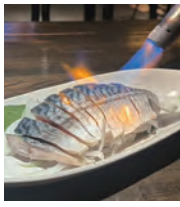
European Style Izakaya
TAIYO ROMAN
 TEL/055-972-2929 **irregular holidays**
 OPEN/5p.m.~0a.m.
 Recommendation **IZAKAYA**
 homemade assorted smoked food creamed escargot
 closed ¥3000 Cash only



Sushi & Eel
KYOMARU
 TEL/055-971-8000 9月第1火水曜 元旦
 OPEN/11p.m.~9p.m.
 Recommendation **E e I**
 Mt.Fuji-KYOMARU set meal
 closed ¥2000 ¥2000 Cash/Cards



RAI4 THE Third
 TEL/055-955-8366 **Tue**
 OPEN/9p.m.~6a.m.
 Recommendation **Dining Bar**
 Miyako buckwheat noodle Rib steak*Craft beer
 closed ¥2000 Cash/Cards



RAI4 Raito
 TEL/055-994-9773 **Tue**
 OPEN/16:30p.m.~0a.m.
 Recommendation **Dining Bar**
 okonomiyaki*grill over vinegared mackrek
 closed ¥3000 Cash/Cards



ODENYA-HONCHAN
 TEL/080-1609-7249 **Mon**
 OPEN/4p.m.~0a.m.
 Recommendation **Oden**
 Oden
 closed ¥3000 Cash only



MIKDADOYA **Tue* Every other Wed**
 TEL/No phone
 OPEN/8p.m.~3a.m.
 Recommendation **IZAKAYA**
 pork skewer
 closed ¥3000 Cash only



TONKATSU RAN **Mon Third Sun**
 TEL/055-975-2767
 OPEN/11a.m.~2p.m. 5p.m.~8:30p.m.
 Recommendation **TONKATU**
 tonkatsu set meal grated chicken cutlet set meal
 closed ¥1400 ¥2000 Cash/Cards



YAMAZAKI
 TEL/055-991-2110 **Sun**
 OPEN/5p.m.~0a.m.
 Recommendation **IZAKAYA**
 sashimi*white offal NATTO revolution
 closed ¥4000 Cash only



SHAKE AND BAKE
 TEL/070-8940-7104 **Tue**
 OPEN/6p.m.~2a.m.
 Recommendation **Dining Bar**
 roasted spare ribs
 closed ¥3000 Cash only



MISHIMAYA
 TEL/055-975-8820 **Thu**
 OPEN/11a.m.~3p.m. 5p.m.~9p.m.
 Recommendation **TONKATU**
 tonkatsu set meal*tempura don conger eel ten don(tempura)
 closed ¥1000 ¥2000 Cash/Cards



Innovative Izakaya
YUGA **open all year round**
 TEL/055-991-6800
 OPEN/5p.m.~1a.m.
 Recommendation **IZAKAYA**
 assorted sashimi lettuce shabu-shabu
 closed ¥4000 Cash/Cards

Excitement and a world of discovery awaits,
right here in beautiful East Shizuoka.
Organize your next convention with us!



Izu Panorama Park



Fuji International Speedway



Japanese spider crab



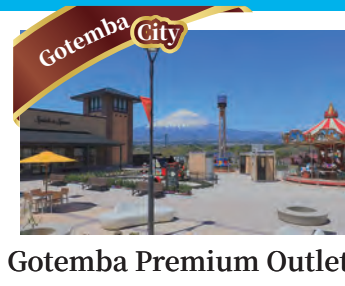
Mishima Taisha Shrine



Nirayama Reverberatory Furnaces



Toi Gold Mine



Gotemba Premium Outlets



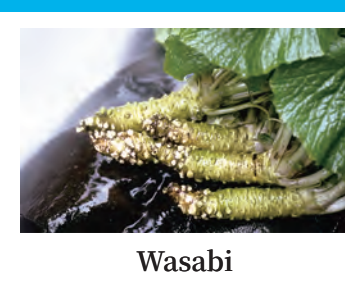
Mandarin Orange



Fuji Safari Park



Kakita River Park



Wasabi



Mishima sky walk



Water gate with Observatory "Byuo"



Strawberry daifuku



Dried fish



Kinomiya Shrine



Jukkoku Pass



Warikozuka Inari Shrine

ACCESS

● From Tokyo (West Bound)

Tokaido Shinkansen "Hikari" Tokyo ▶▶▶▶▶ Atami 36mins

Tokaido Shinkansen "Hikari" Tokyo ▶▶▶▶▶ Mishima 42mins

Special Express "Odoriko" Tokyo ▶▶▶▶▶ Shuzenji 126mins

Odakyu Romance car "Fujisan" Shinjyuku ▶▶▶▶ Gotemba 93mins

● From Nagoya (East)

Tokaido Shinkansen "Hikari" Nagoya ▶▶▶▶ Mishima 74mins

Tokaido Shinkansen "Hikari" Nagoya ▶▶▶▶ Atami 81mins



Shizuoka East Convention Bureau

The second floor, Antre, 1-1-10temachi, Numazu City,
Shizuoka Prefecture, 410-0801

TEL 055-964-1800

FAX 055-962-1800

HP <https://www.shizutou-cb.jp/>

Supporting Your Next
Great Convention

